

## C&O Family Chess Center

Omar Pancoast - Director

217 West Diamond Avenue

Gaithersburg, MD 20877

(301) 963-9122 / [www.chesscenter.net](http://www.chesscenter.net)

### The “Four-Move Checkmate” & Other Opening Traps for Beginners!

#### Example Games

© 1999, 2001, 2008 C&O Family Chess Center

These games illustrate common themes, often used by beginners to achieve a quick win. While the openings are rarely seen in games by experienced players, they are important to know, especially if you don't want to be the victim of one of these attacks. Weak moves by one player are what allow the other player to win quickly ...*if he takes advantage*. Any game of less than 20 moves is considered very short.

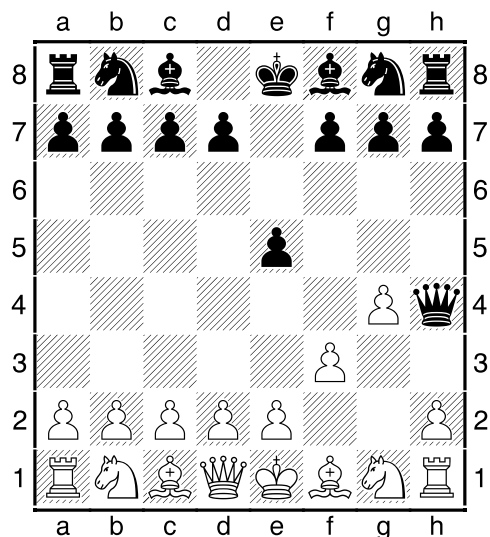
Many of these traps are based on unsound moves, such as developing the queen too early, (as is required in the Scholar's Mate pattern). This is a double-edged sword which may rebound on the user if he is not careful.

One of the best ways to improve is to learn what *not* to do as well as what *to* do. So the mistakes will often be identified and better moves suggested, as well. It is recommended that players be familiar with the *7 Things To Do in the First 10 Moves*, and *The “10 Bad Moves.”*

The quickest possible checkmate takes only two moves and is known as the Fool's Mate.

#### Fool's Mate

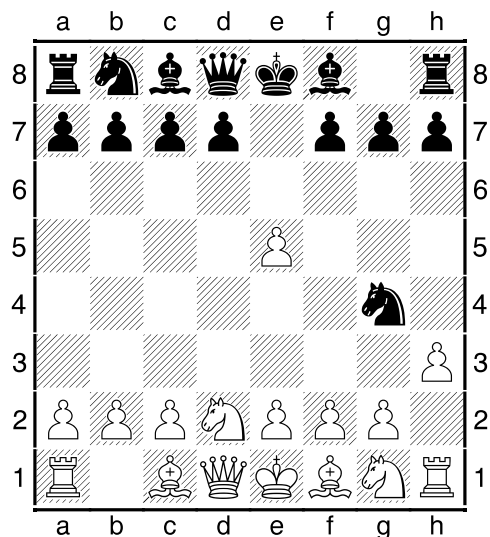
- |         |          |
|---------|----------|
| 1. f3?? | e5       |
| 2. g4?? | Qh4# 0-1 |



Fool's Mate  
White is checkmated.

#### Fool's Mate Theme

- |         |     |
|---------|-----|
| 1. d4   | Nf6 |
| 2. Nd2  | e5  |
| 3. dxe5 | Ng4 |
| 4. h3?? | ... |

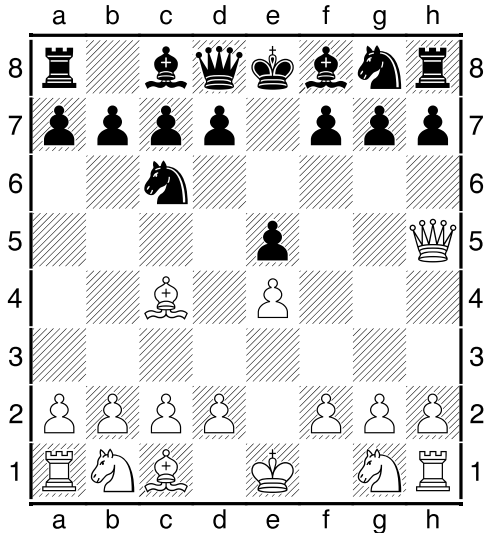


After 4. h3

- |         |           |
|---------|-----------|
| 4. ...  | Ne3!!     |
| 5. fxe3 | Qh4+      |
| 6. g3   | Qxg3# 0-1 |

### Scholar's Mate (Bishop's Opening)

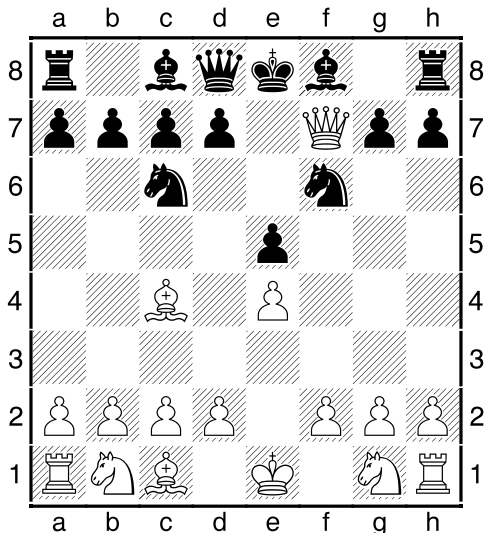
- |        |     |
|--------|-----|
| 1. e4  | e5  |
| 2. Bc4 | Nc6 |
| 3. Qh5 | ... |



After 3.Qh5

The position may also be arrived at through a different move order (Pater's Opening), 1. e4 e5 2. Qh5 Nc6 3. Bc4 ...

- |          |       |
|----------|-------|
| 3. ...   | Nf6?? |
| 4. Qxf7# | 1-0   |

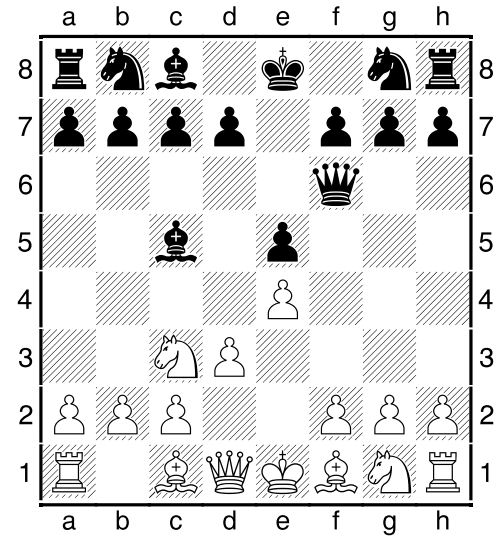


Scholar's Mate  
Black is checkmated.

### Scholar's Mate for Black

- |       |    |
|-------|----|
| 1. e4 | e5 |
|-------|----|

- |        |     |
|--------|-----|
| 2. Nc3 | Bc5 |
| 3. d3  | Qf6 |



After 3...Qf6

- |          |           |
|----------|-----------|
| 4. Nd5?? | Qxf2# 0-1 |
|----------|-----------|

### Scholar's Mate Theme

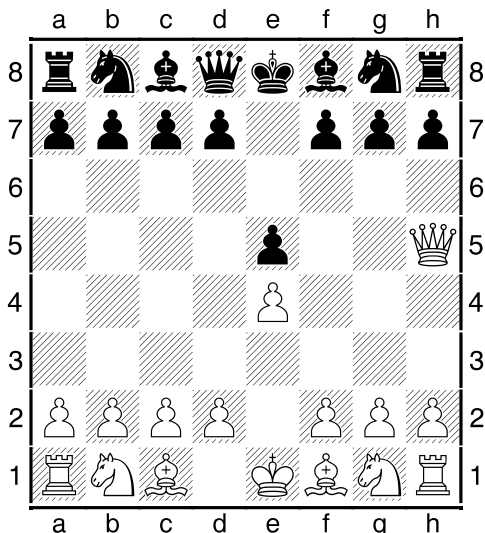
- |         |          |
|---------|----------|
| 1. e4   | e5       |
| 2. Qh5  | Qf6      |
| 3. Bc4  | Bc5      |
| 4. a3   | d5       |
| 5. Bxd5 | Qxf2+    |
| 6. Kd1  | Qf1# 0-1 |

### Student Game Pater's Opening

- |          |          |
|----------|----------|
| 1. e4    | e5       |
| 2. Qh5   | Qf6      |
| 3. Bc4   | Nh6      |
| 4. d3    | Bc5      |
| 5. Bxh6  | Qxf2+    |
| 6. Kd1   | Qf1+     |
| 7. Kd2   | Qxg2+    |
| 8. Kc3   | Bd4+     |
| 9. Kb4   | Nc6+     |
| 10. Kb3  | Na5+     |
| 11. Kb4  | Nxc4     |
| 12. Kxc4 | d5+      |
| 13. Kxd5 | Be6# 0-1 |

### Patzer's Opening

1. e4 e5  
2. Qh5 ...



After 2.Qh5

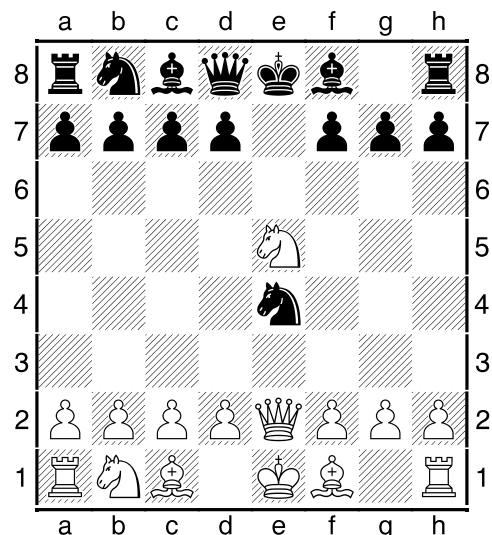
2. ... g6??  
3. Qxe5+ Qe7  
4. Qxh8 Qxe4+  
5. Ne2 Ne7  
6. Nc3 Qh4  
7. g3 Qh5  
8. Nf4 Qf3  
9. Bg2 Qg4  
10. Ne4 Ng8  
11. Nd5 Qf5  
12. Nxc7+ Ke7  
13. Nxa8 Resigns 1-0

### Patzer's Opening

1. e4 e5  
2. Qh5 Nc6  
3. Bc4 g6  
4. Qf3 d6??  
5. Qxf7# 1-0

### Petrov's Defense

1. e4 e5  
2. Nf3 Nf6  
3. Nxe5 Nxe4  
4. Qe2 ...



After 4.Qe2

4. ... Nd6??  
5. Nc6+ Resigns 1-0

### Petrov's Defense

1. e4 e5  
2. Nf3 Nf6  
3. Bc4 Nxe4  
4. Nxe5 Qf6  
5. Bxf7+ Kd8  
6. d4 Qxf2# 0-1

### Petrov's Defense

1. e4 e5  
2. Nf3 Nf6  
3. Bc4 Nxe4  
4. Nxe5 Qe7  
5. Nf3?? Nc3+  
White Resigns 0-1

### Philidor's Defense (Legal's Mate)

1. e4 e5  
2. Nf3 d6  
3. Nc3 Bg4  
4. Bc4 g6?  
5. Nxe5 Bxd1??  
6. Bxf7+ Ke7  
7. Nd5# 1-0

**Legal's Mate Theme**

- |           |           |
|-----------|-----------|
| 1. e4     | e5        |
| 2. d3     | Nf6       |
| 3. Bg5    | Nc6       |
| 4. h3?    | Bc5       |
| 5. Ne2    | Nxe4      |
| 6. Bxd8?? | Bxf2# 0-1 |

**Philidor's Defense  
(Legal's Mate Theme)**

- |          |        |
|----------|--------|
| 1. e4    | e5     |
| 2. Nf3   | d6     |
| 3. Nc3   | Bg4    |
| 4. Bc4   | Nc6    |
| 5. O-O   | Nd4?   |
| 6. Nxe5  | Bxd1?? |
| 7. Bxf7+ | Ke7    |
| 8. Nd5#  | 1-0    |

**More quick mates, etc.****Sommer,W - Schmidt Schaeffer,S****[C33]** Triberg rapid (1), 1991

- 1.e4 e5 2.f4 exf4 3.e5 Qh4+ 4.Ke2 Bc5  
5.d3?? [5.d4] 5...Qf2# 0-1

**Jahn,C - Bayer,C [C44]**

PF-op Mehlingen, 1992

- 1.e4 e5 2.Nf3 Nc6 3.d4 f6 4.Bc4 Bb4+??  
[4...exd4] 5.c3 Ba5 6.dxe5 fxe5?? [6...Qe7]  
7.Nxe5?? [7.Bxg8 Rxc8 8.Qd5 Rf8 9.Bg5  
Ne7 10.Qxa5] 7...Nxe5 8.Qh5+ Nf7 9.Qxf7#  
1-0

**Dunn, H - Wall, B [C20]**

- 1.e4 e5 2.Qh5 Nc6 3.Bb5? [3.Bc4] 3...d6  
4.Bxc6+ bxc6 5.Qe2? [5.d3] 5...f5 6.Qc4? c5  
7.exf5? [7.d3] 7...Bxf5 8.Na3? [8.Nc3] 8...Nf6  
9.d3 Be7 10.Bg5 d5 11.Qb5+ Bd7 12.Qb3  
Rb8 13.Qc3 d4 14.Qd2 c4 15.0-0-0??  
Loses. [15.Nxc4] 15...Bxa3 16.bxa3 c3  
17.Qe2 Rb1+! 18.Kxb1 Qb8+ 0-1  
(19...Qb2#)

**Amaral,A - Oliveira,V [C46]**

POR-chJW U18 1992

- 1.e4 e5 2.Nc3 Bc5 3.Nf3 Nc6 4.Nd5 Nf6  
5.Nxf6+ Qxf6 6.Qe2 0-0 7.Qc4 d6 8.Qc3?  
[8.d3] 8...Bg4 9.Nxe5?? [9.h3] 9...Qxf2# 0-1

**Grau Carrera,M - Skerlikova,J [C50]**

EU-chJW U10 Herculan 1994

- 1.e4 e5 2.Nf3 Nc6 3.d4 exd4 4.Bc4 Be7?  
[4...Bb4+] 5.Nxd4 Nxd4 6.Qxd4 d6??  
[6...Bf6] 7.Qxg7 Bf6?? [7...Be6] 8.Qxf7# 1-0

**Bejarano,L - Araujo,B [C50]**

WchJW-U10 St.Lorenzo (7), 1995

- 1.e4 e5 2.Nf3 Nc6 3.Bc4 Nd4 4.Nxd4 exd4  
5.d3 Nf6 6.e5 Ng8 7.0-0? [7.Qf3] 7...Bb4??  
[7...d5] 8.a3 [8.Qg4] 8...Be7? [8...d5] 9.Qf3  
Bc5?? [9...d5] 10.Qxf7# 1-0

**Kohn,C - Sperling,C [A11]**

RLPF-chW Pirmasens, 1992

- 1.c4 c6 2.Nc3 d5 3.e4 d4 4.Nce2 e5 5.Nf3  
Qa5 6.a3 Nd7 7.b4?? [7.Ng3] 7...Bxb4  
8.Qb3 Bd6 9.Bb2 Nc5 10.Qd1?? [10.Qc2]  
10...Nd3# 0-1

**Dubois,L - Mapelle,J [C57]**

Val Maubuee op, 1989

- 1.e4 e5 2.Nf3 Nc6 3.Bc4 Nf6 4.Ng5 d5  
5.exd5 Nxd5 6.Nxf7 Kxf7 7.Qf3+ Ke8  
8.Bxd5 Nd4?? [8...Qf6] 9.Qf7# 1-0

**Cvitanic,J - Egbeyemi,O [C57]**

WchJM-U12 Duisburg (5), 1992

- 1.e4 e5 2.Nf3 Nc6 3.Bc4 Nf6 4.Ng5 d5  
5.exd5 Nxd5 6.d3 Be7 7.Qh5 Bxg5 8.Bxg5  
Qd6 9.Qf3 Ndb4?? [9...Nd4] 10.Qxf7# 1-0

**Reinecker,K - Vaut,A [B17]**

Bargteheide op, 1989

- 1.e4 c6 2.d4 d5 3.Nc3 dxe4 4.Nxe4 Nd7  
5.Qe2 Ngf6?? [5...Ndf6] 6.Nd6# 1-0

**Moura,A - Manso,P [C60]**

POR-chT (3), 1993

- 1.e4 e5 2.Nf3 Nc6 3.Bb5 a6 4.Ba4 Nge7  
5.0-0 b5 6.Bb3 Na5?? [6...Ng6] 7.Nxe5  
d6?? [7...Nxb3] 8.Bxf7# 1-0